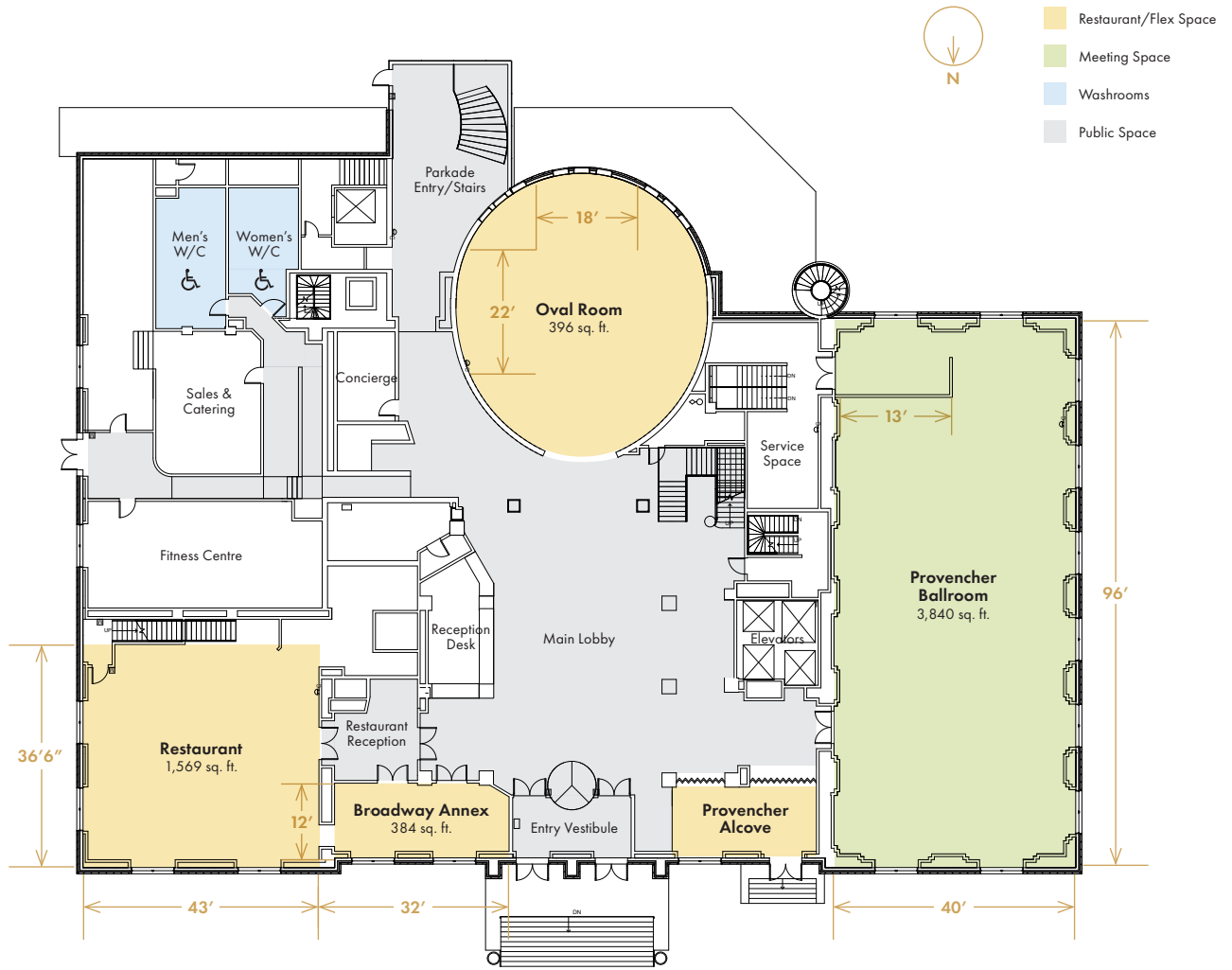




MAIN FLOOR

FLOOR PLAN



CAPACITY CHART

ROOM	DIMENSIONS	SQUARE FEET	CEILING HEIGHT	ACCESSIBLE YES OR NO	THEATRE STYLE (WITH HEAD TABLE)	BOARD-ROOM	CLASSROOM (STRAIGHT WITH HEAD TABLE)	U-SHAPE	HALLOW SQUARE	HALF ROUNDS OF 6 (WITH HEAD TABLE)	ROUNDS (WITH HEAD TABLE/AV/BAR)	COCKTAIL RECEPTION
Provencher Ballroom	96' x 40'	3,840	22'	Yes	425	70	180	80	90	150	250	500
Provencher Alcove	12' x 26'	312	10'	Yes	-	-	20	-	-	-	-	-
Oval Room	22' x 18'*	396	26'	Yes	100	30	60	38	40	-	80	100
Restaurant	36'6" x 43'	1,569	10'	Yes	100	40	55	36	44	48	80	110
Broadway Annex	12' x 32'	384	10'	Yes	25	20	20	-	-	-	20	30

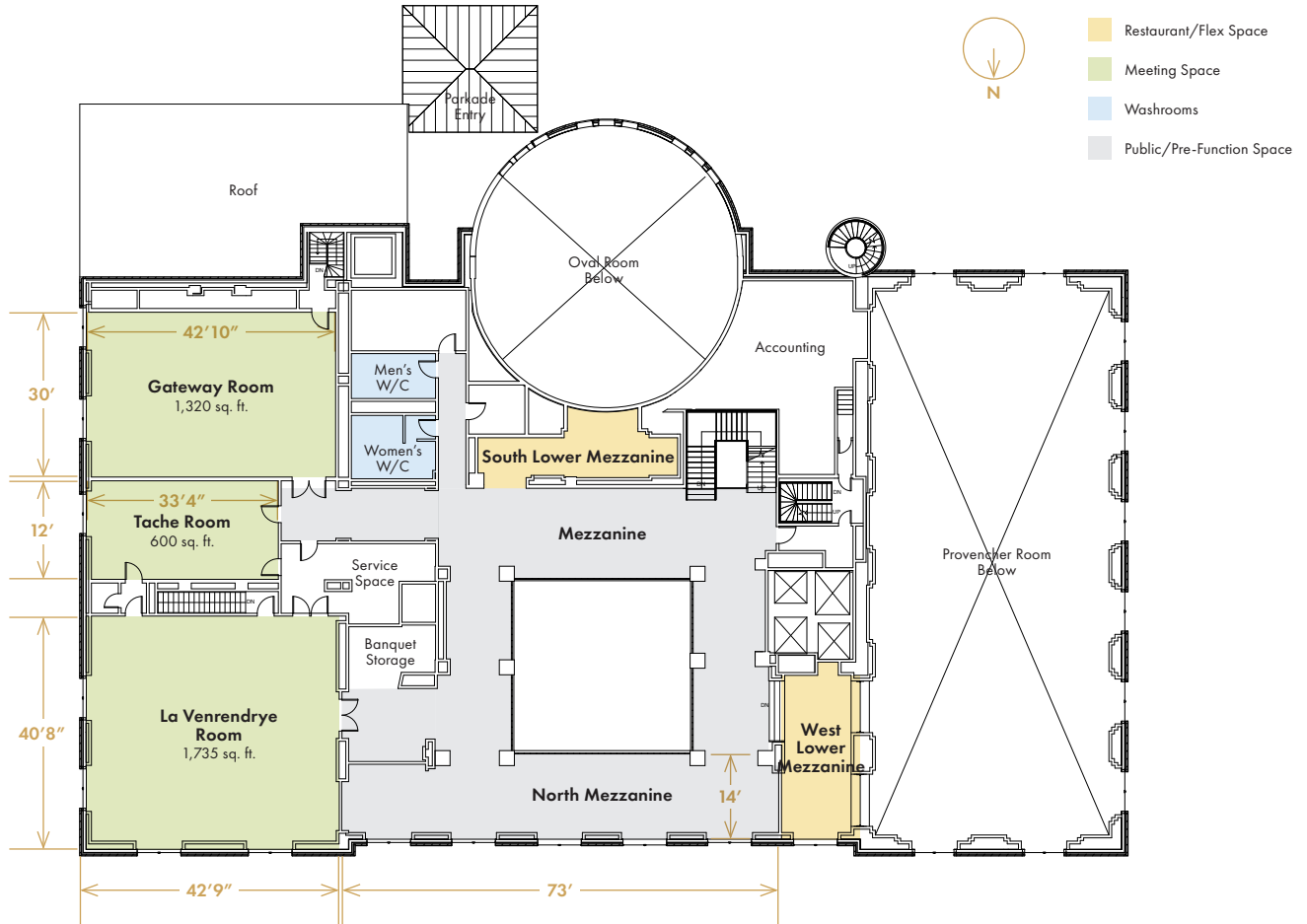
ELEVATOR INFO

ELEVATOR	DIMENSIONS	HEIGHT	WEIGHT LOAD	LOCATION
Fort Garry Hotel Loading Elevator	5'8" x 5'10" (door 4' wide)	7'9"	3000 lbs./1360 kg	Access of main delivery door off FORT Street



MEZZANINE FLOOR

FLOOR PLAN



CAPACITY CHART

ROOM	DIMENSIONS	SQUARE FEET	CEILING HEIGHT	ACCESSIBLE YES OR NO	THEATRE STYLE (WITH HEAD TABLE)	BOARD-ROOM	CLASSROOM (STRAIGHT WITH HEAD TABLE)	U-SHAPE	HALLOW SQUARE	HALF ROUNDS OF 6 (WITH HEAD TABLE)	ROUNDS (WITH HEAD TABLE/AV/BAR)	COCKTAIL RECEPTION
La Venrendrye Room	42'9" x 40'8"	1,735	8'10"	Yes	160	36	80	42	56	54	90	180
Gateway-Tache Combined	-	1,920	8'10"	Yes	179	40	100	56	60	54	90	200
Gateway Room	42'10" x 30'	1,320	8'10"	Yes	130	32	60	40	50	36	60	100
Tache Room	33'4" x 12'	600	8'10"	Yes	50	26	24	-	16	-	24	30
Mezzanine Complete	-	3,118	9'	Yes	-	-	-	-	-	-	-	250
North Mezzanine	73' x 14'	1,022	9'	Yes	-	-	-	-	-	-	-	140
West Lower Mezzanine	26' x 12'	312	10'	-	-	20	-	-	-	-	-	-
South Lower Mezzanine	32' x 9'	288	10'	-	-	18	-	-	-	-	-	-

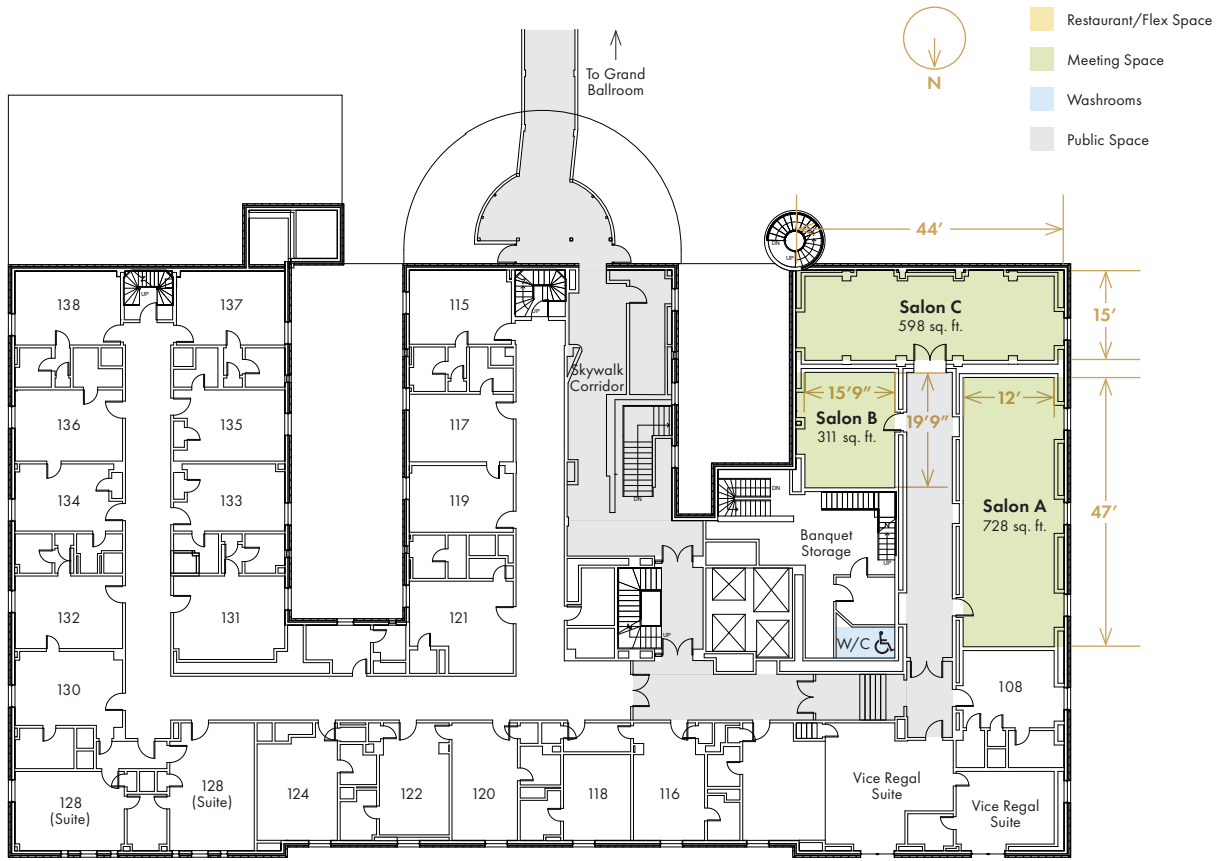
ELEVATOR INFO

ELEVATOR	DIMENSIONS	HEIGHT	WEIGHT LOAD	LOCATION
Fort Garry Hotel Loading Elevator	5'8" x 5'10" (door 4' wide)	7'9"	3000 lbs./1360 kg	Access of main delivery door off FORT Street



1ST FLOOR

FLOOR PLAN



CAPACITY CHART

ROOM	DIMENSIONS	SQUARE FEET	CEILING HEIGHT	ACCESSIBLE YES OR NO	THEATRE STYLE (WITH HEAD TABLE)	BOARD-ROOM	CLASSROOM (STRAIGHT WITH HEAD TABLE)	U-SHAPE	HALLOW SQUARE	HALF ROUNDS OF 6 (WITH HEAD TABLE)	ROUNDS (WITH HEAD TABLE/AV/BAR)	COCKTAIL RECEPTION
Salon A	47' x 15'5"	728	10'	Yes	60	38	42	-	-	18	30	80
Salon B	19'9" x 15'9"	311	10'	Yes	-	16	-	-	-	-	-	-
Salon C	44' x 15'	598	10'	Yes	40	32	34	-	-	18	30	60

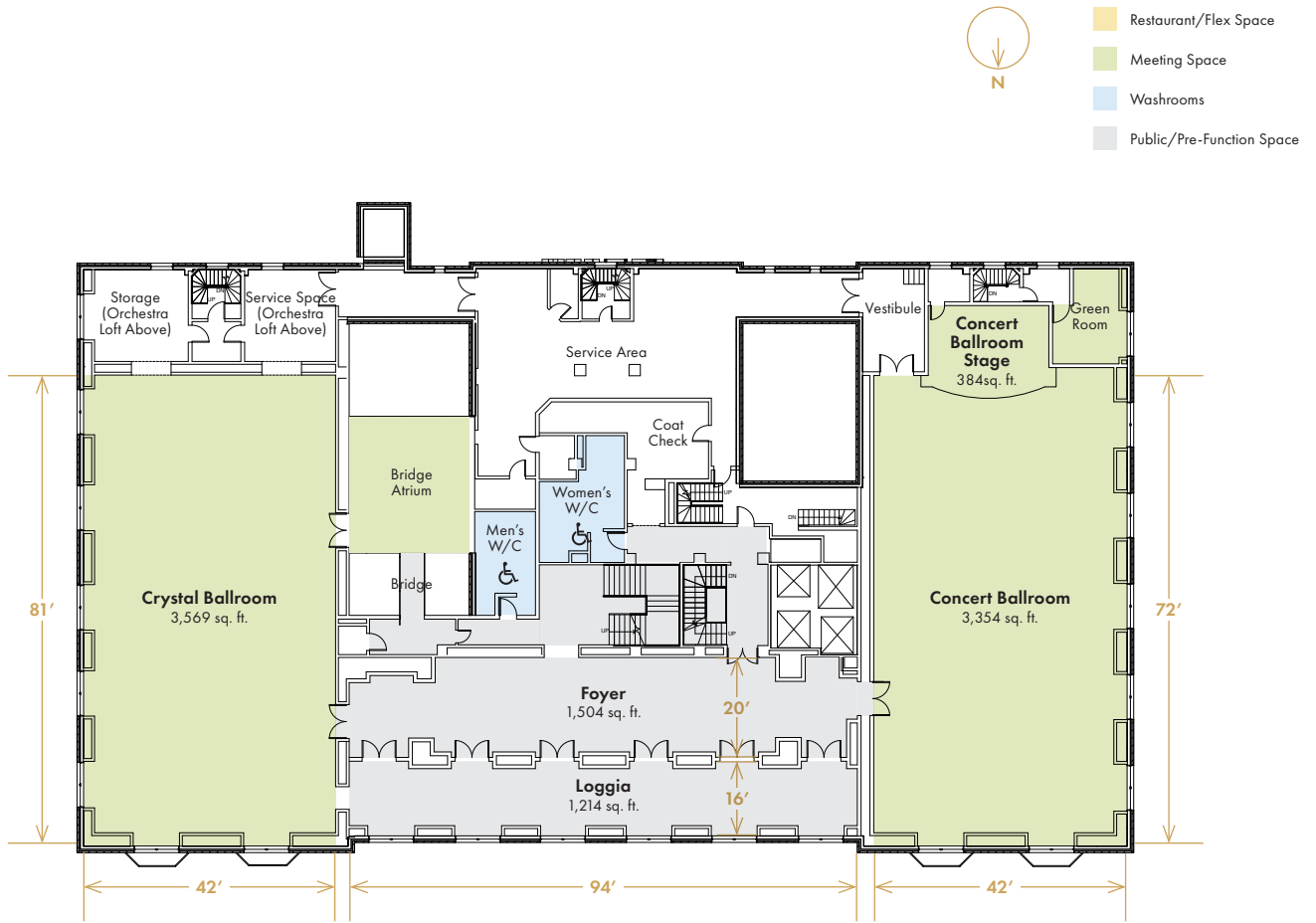
ELEVATOR INFO

ELEVATOR	DIMENSIONS	HEIGHT	WEIGHT LOAD	LOCATION
Fort Garry Hotel Loading Elevator	5'8" x 5'10" (door 4' wide)	7'9"	3000 lbs./1360 kg	Access of main delivery door off FORT Street



7TH FLOOR

FLOOR PLAN



CAPACITY CHART

ROOM	DIMENSIONS	SQUARE FEET	CEILING HEIGHT	ACCESSIBLE YES OR NO	THEATRE STYLE (WITH HEAD TABLE)	BOARD-ROOM	CLASSROOM (STRAIGHT WITH HEAD TABLE)	U-SHAPE	HALLOW SQUARE	HALF ROUNDS OF 6 (WITH HEAD TABLE)	ROUNDS (WITH HEAD TABLE/ AV/ BAR)	COCKTAIL RECEPTION
Crystal Ballroom	81' x 42'	3,569	22'	Yes	400	60	160	80	84	150	250	450
Concert Ballroom	81' x 42'	3,354	22'	Yes	350	50	150	60	70	126	210	400
Concert Ballroom Stage	16' x 24'	384	22'	No	-	-	-	-	-	-	-	-
Foyer	16' x 94'	1,504	22'	Yes	-	-	-	-	-	-	-	100
Loggia	20' x 94'	1,214	22'	Yes	-	-	-	-	-	-	-	-

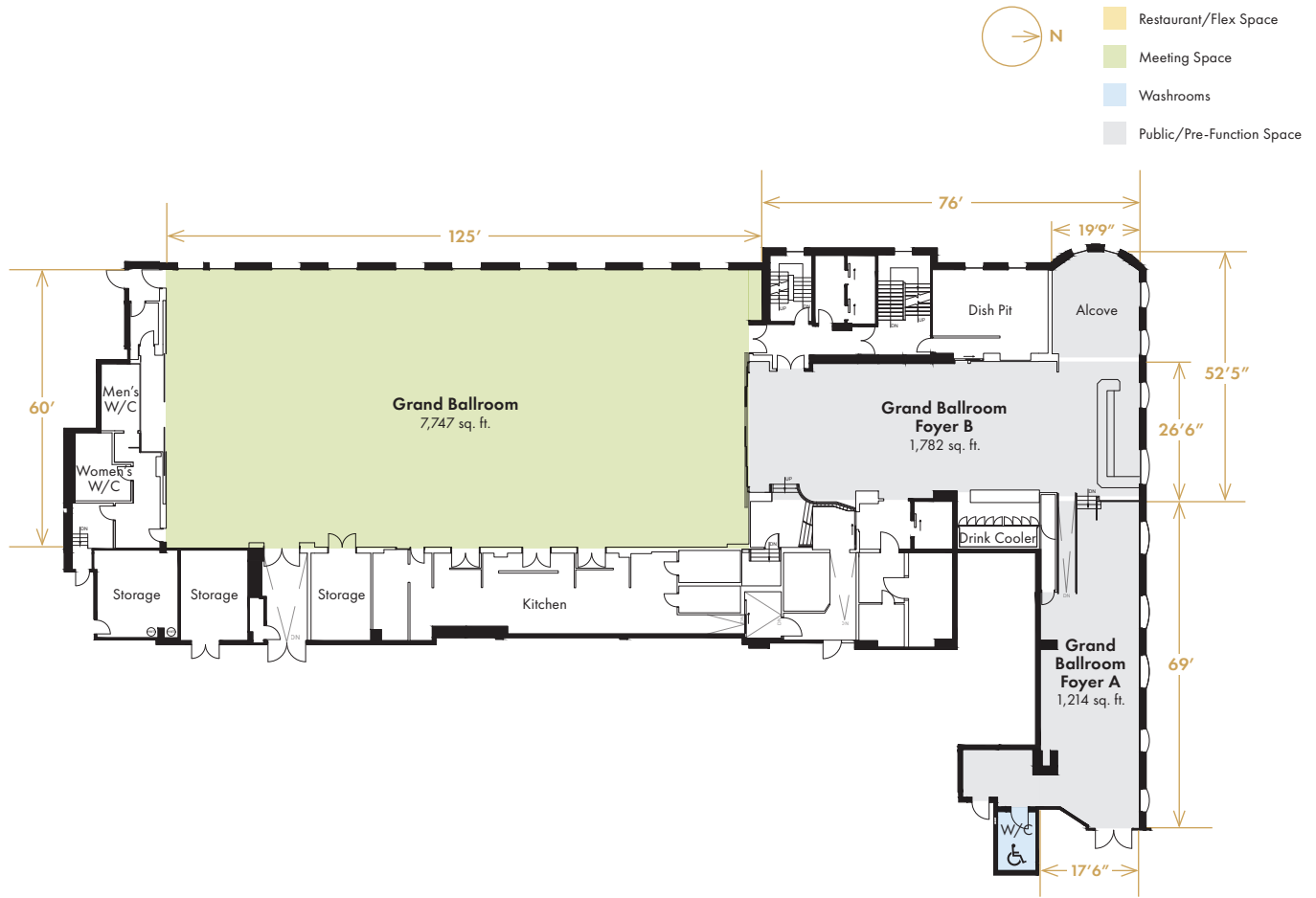
ELEVATOR INFO

ELEVATOR	DIMENSIONS	HEIGHT	WEIGHT LOAD	LOCATION
Fort Garry Hotel Loading Elevator	5'8" x 5'10" (door 4' wide)	7'9"	3000 lbs./1360 kg	Access of main delivery door off FORT Street



FORT GARRY PLACE

FLOOR PLAN



CAPACITY CHART

ROOM	DIMENSIONS	SQUARE FEET	CEILING HEIGHT	ACCESSIBLE YES OR NO	THEATRE STYLE (WITH HEAD TABLE)	BOARD-ROOM	CLASSROOM (STRAIGHT WITH HEAD TABLE)	U-SHAPE	HOLLOW SQUARE	HALF ROUNDS OF 6 (WITH HEAD TABLE)	ROUNDS (WITH HEAD TABLE / AV / BAR)	COCKTAIL RECEPTION
Grand Ballroom	60' x 125'	7,747	23'	Yes	950	120	380	160	130	360	550	1000
Grand Ballroom Foyer A	69' x 17'6"	1,214	9'6"	Yes	-	-	-	-	-	-	-	75
Grand Ballroom Foyer B	76' x 26'6"	1,782	10'6"	Yes	-	-	-	-	-	-	-	100

ELEVATOR INFO

ELEVATOR	DIMENSIONS	HEIGHT	WEIGHT LOAD	LOCATION
Fort Garry Place Loading Elevator	4'3" x 5'8" (door 3' wide)	7'9"	4000 lbs./1814 kg	Access off GARRY Street
Loading Ramp (Vehicle Access)	Door 7' Wide	7'		Fort Garry Place - Parking Level P3



FORT GARRY PLACE (2)

FLOOR PLAN



CAPACITY CHART

ROOM	DIMENSIONS	SQUARE FEET	ACCESSIBLE YES OR NO	THEATRE STYLE (WITH HEAD TABLE)	BOARD- ROOM	CLASSROOM (STRAIGHT WITH HEAD TABLE)	U-SHAPE	HALLOW SQUARE	HALF ROUNDS OF 6 (WITH HEAD TABLE)	ROUNDS (WITH HEAD TABLE/AV/ BAR)	COCKTAIL RECEPTION
Selkirk Ballroom	69'7" x 28'9"	2,582	Yes	150	54	100	63	66	60	100	150