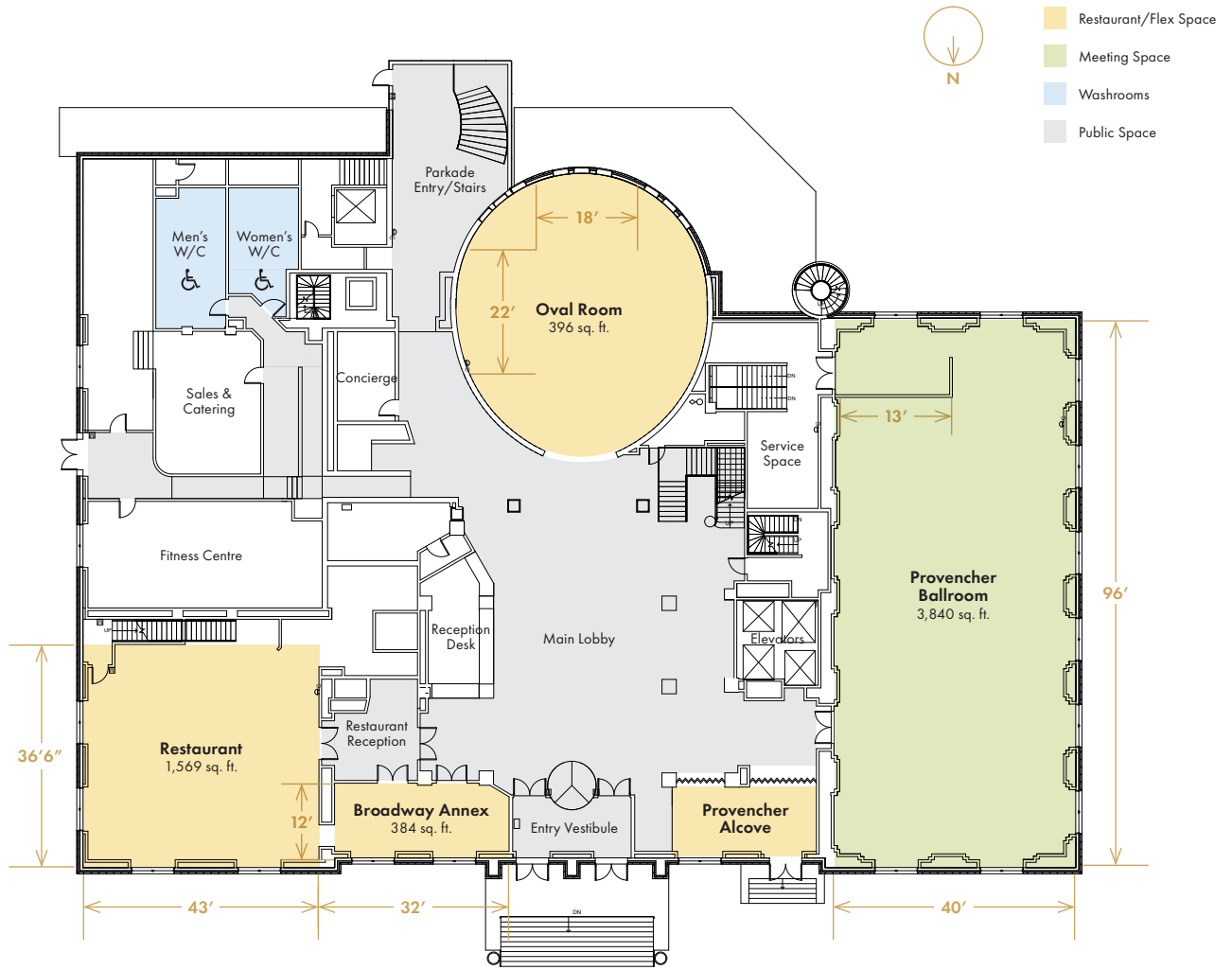




# MAIN FLOOR

## FLOOR PLAN



### CAPACITY CHART

ROOM	DIMENSIONS	SQUARE FEET	CEILING HEIGHT	ACCESSIBLE YES OR NO	THEATRE STYLE (WITH HEAD TABLE)	BOARD-ROOM	CLASSROOM (STRAIGHT WITH HEAD TABLE)	U-SHAPE	HALLOW SQUARE	HALF ROUNDS OF 6 (WITH HEAD TABLE)	ROUNDS (WITH HEAD TABLE/AV/BAR)	COCKTAIL RECEPTION
Provencher Ballroom	96' x 40'	3,840	22'	Yes	425	70	180	80	90	150	250	500
Provencher Alcove	12' x 26'	312	10'	Yes	-	-	20	-	-	-	-	-
Oval Room	22' x 18'*	396	26'	Yes	100	30	60	38	40	-	80	100
Restaurant	36'6" x 43'	1,569	10'	Yes	100	40	55	36	44	48	80	110
Broadway Annex	12' x 32'	384	10'	Yes	25	20	20	-	-	-	20	30

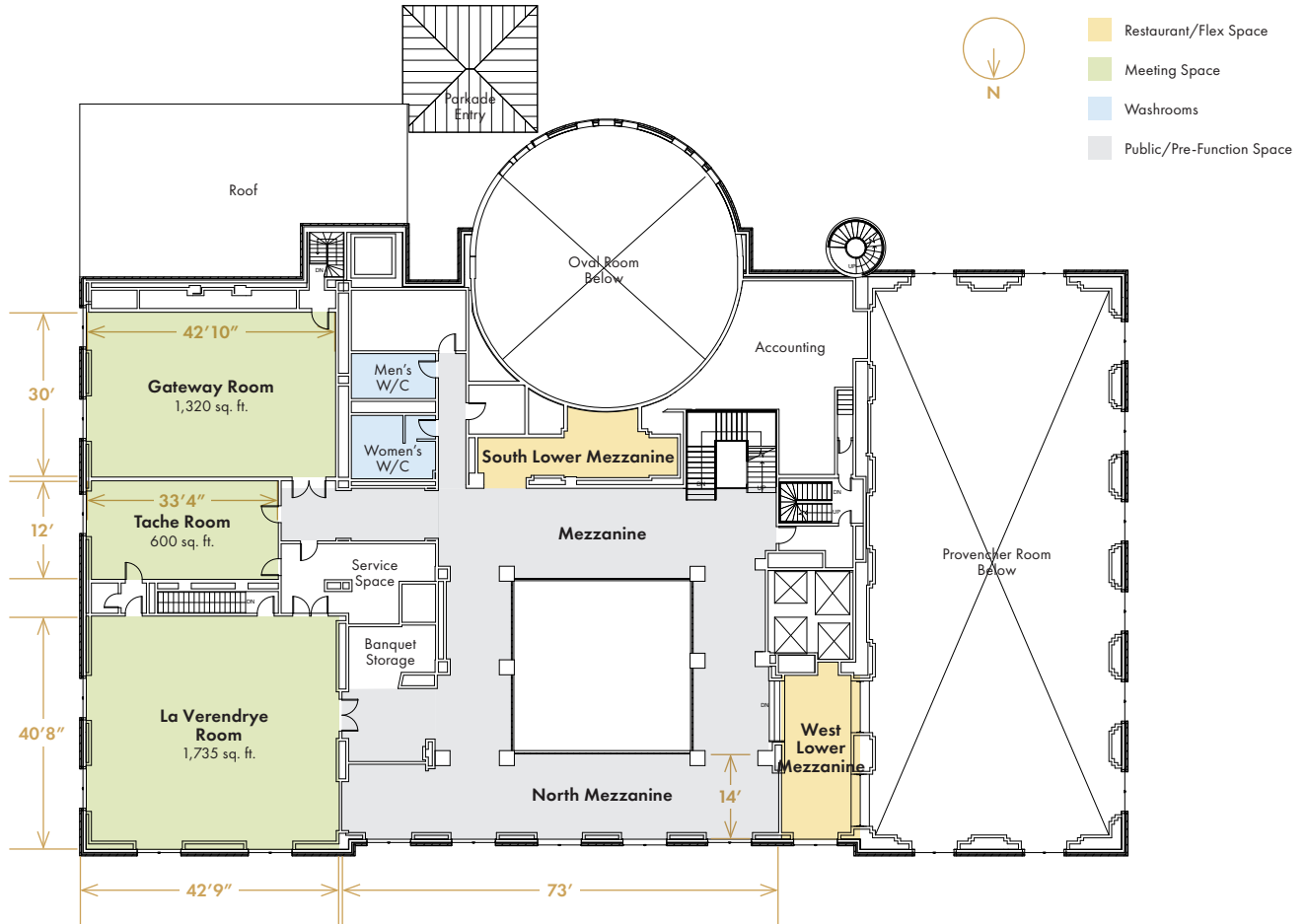
### ELEVATOR INFO

ELEVATOR	DIMENSIONS	HEIGHT	WEIGHT LOAD	LOCATION
Fort Garry Hotel Loading Elevator	5'8" x 5'10" (door 4' wide)	7'9"	3000 lbs./1360 kg	Access of main delivery door off FORT Street



# MEZZANINE FLOOR

## FLOOR PLAN



## CAPACITY CHART

ROOM	DIMENSIONS	SQUARE FEET	CEILING HEIGHT	ACCESSIBLE YES OR NO	THEATRE STYLE (WITH HEAD TABLE)	BOARD-ROOM	CLASSROOM (STRAIGHT WITH HEAD TABLE)	U-SHAPE	HALLOW SQUARE	HALF ROUNDS OF 6 (WITH HEAD TABLE)	ROUNDS (WITH HEAD TABLE/AV/BAR)	COCKTAIL RECEPTION
La Verendrye Room	42'9" x 40'8"	1,735	8'10"	Yes	160	36	80	42	56	54	90	180
Gateway-Tache Combined	-	1,920	8'10"	Yes	179	40	100	56	60	54	90	200
Gateway Room	42'10" x 30'	1,320	8'10"	Yes	130	32	60	40	50	36	60	100
Tache Room	33'4" x 12'	600	8'10"	Yes	50	26	24	-	16	-	24	30
Mezzanine Complete	-	3,118	9'	Yes	-	-	-	-	-	-	-	250
North Mezzanine	73' x 14'	1,022	9'	Yes	-	-	-	-	-	-	-	140
West Lower Mezzanine	26' x 12'	312	10'	-	-	20	-	-	-	-	-	-
South Lower Mezzanine	32' x 9'	288	10'	-	-	18	-	-	-	-	-	-

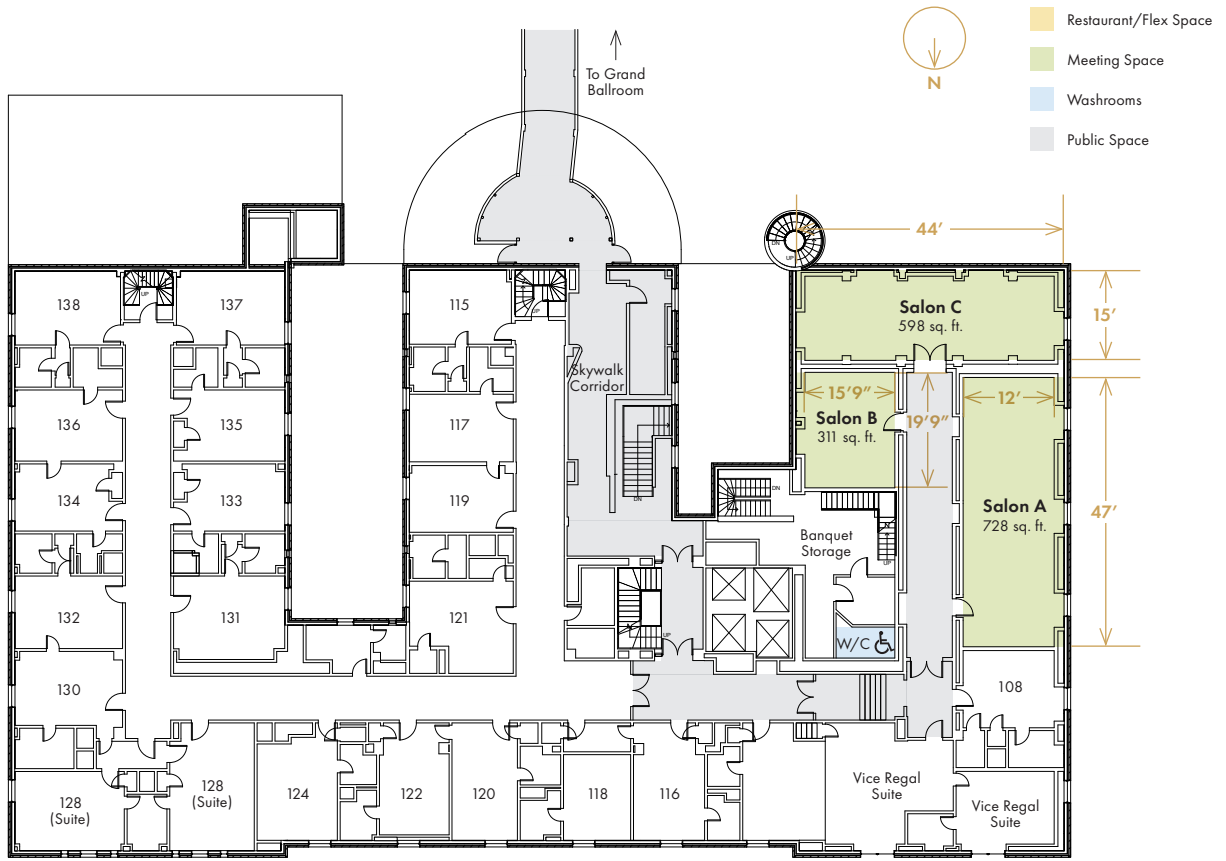
## ELEVATOR INFO

ELEVATOR	DIMENSIONS	HEIGHT	WEIGHT LOAD	LOCATION
Fort Garry Hotel Loading Elevator	5'8" x 5'10" (door 4' wide)	7'9"	3000 lbs./1360 kg	Access of main delivery door off FORT Street



# 1<sup>ST</sup> FLOOR

## FLOOR PLAN



### CAPACITY CHART

ROOM	DIMENSIONS	SQUARE FEET	CEILING HEIGHT	ACCESSIBLE YES OR NO	THEATRE STYLE (WITH HEAD TABLE)	BOARD-ROOM	CLASSROOM (STRAIGHT WITH HEAD TABLE)	U-SHAPE	HALLOW SQUARE	HALF ROUNDS OF 6 (WITH HEAD TABLE)	ROUNDS (WITH HEAD TABLE/AV/BAR)	COCKTAIL RECEPTION
Salon A	47' x 15'5"	728	10'	Yes	60	38	42	-	-	18	30	80
Salon B	19'9" x 15'9"	311	10'	Yes	-	16	-	-	-	-	-	-
Salon C	44' x 15'	598	10'	Yes	40	32	34	-	-	18	30	60

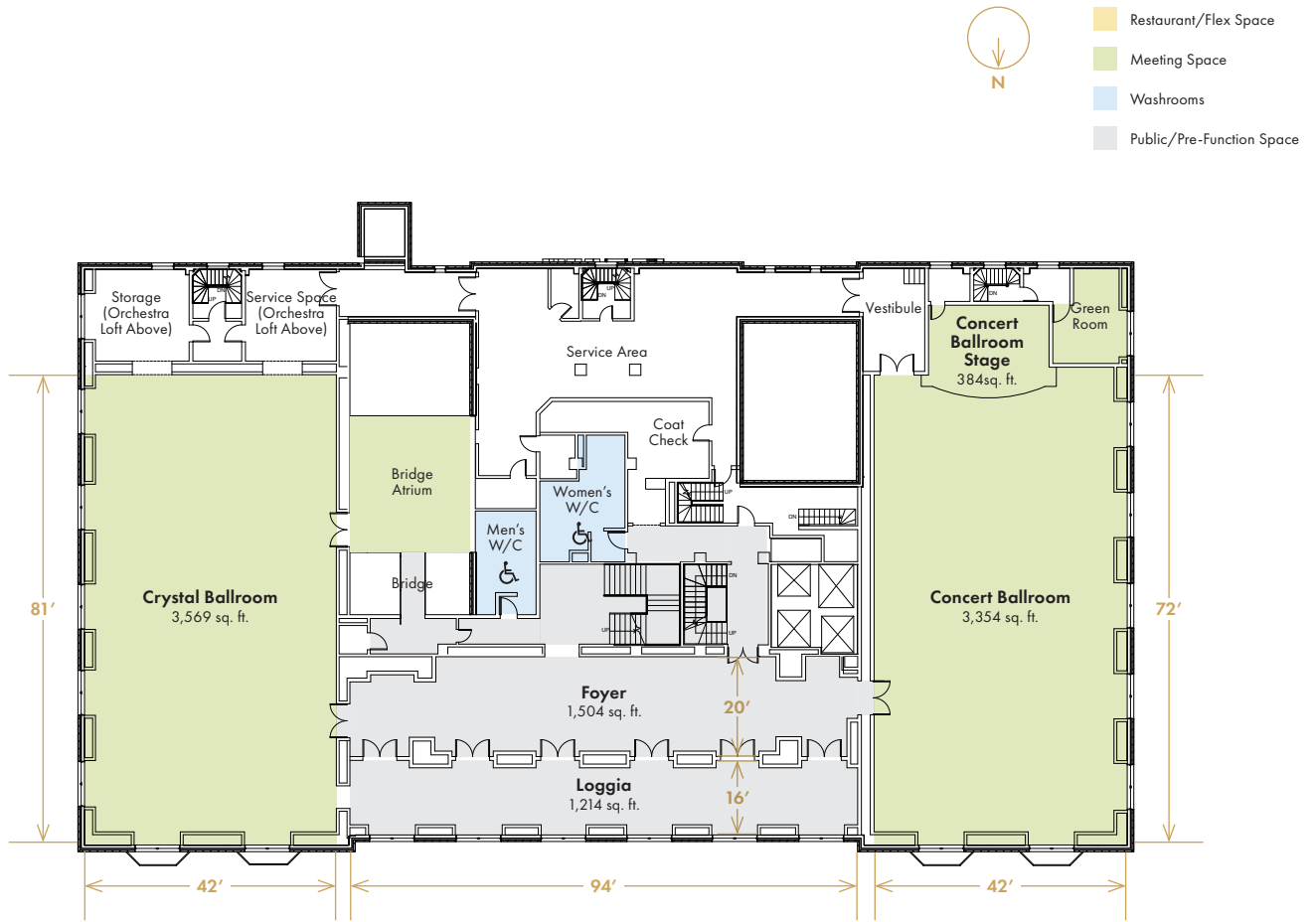
### ELEVATOR INFO

ELEVATOR	DIMENSIONS	HEIGHT	WEIGHT LOAD	LOCATION
Fort Garry Hotel Loading Elevator	5'8" x 5'10" (door 4' wide)	7'9"	3000 lbs./1360 kg	Access of main delivery door off FORT Street



# 7<sup>TH</sup> FLOOR

## FLOOR PLAN



### CAPACITY CHART

ROOM	DIMENSIONS	SQUARE FEET	CEILING HEIGHT	ACCESSIBLE YES OR NO	THEATRE STYLE (WITH HEAD TABLE)	BOARD-ROOM	CLASSROOM (STRAIGHT WITH HEAD TABLE)	U-SHAPE	HOLLOW SQUARE	HALF ROUNDS OF 6 (WITH HEAD TABLE)	ROUNDS (WITH HEAD TABLE/ AV/ BAR)	COCKTAIL RECEPTION
Crystal Ballroom	81' x 42'	3,569	22'	Yes	400	60	160	80	84	150	250	450
Concert Ballroom	81' x 42'	3,354	22'	Yes	350	50	150	60	70	126	210	400
Concert Ballroom Stage	16' x 24'	384	22'	No	-	-	-	-	-	-	-	-
Foyer	16' x 94'	1,504	22'	Yes	-	-	-	-	-	-	-	100
Loggia	20' x 94'	1,214	22'	Yes	-	-	-	-	-	-	-	-

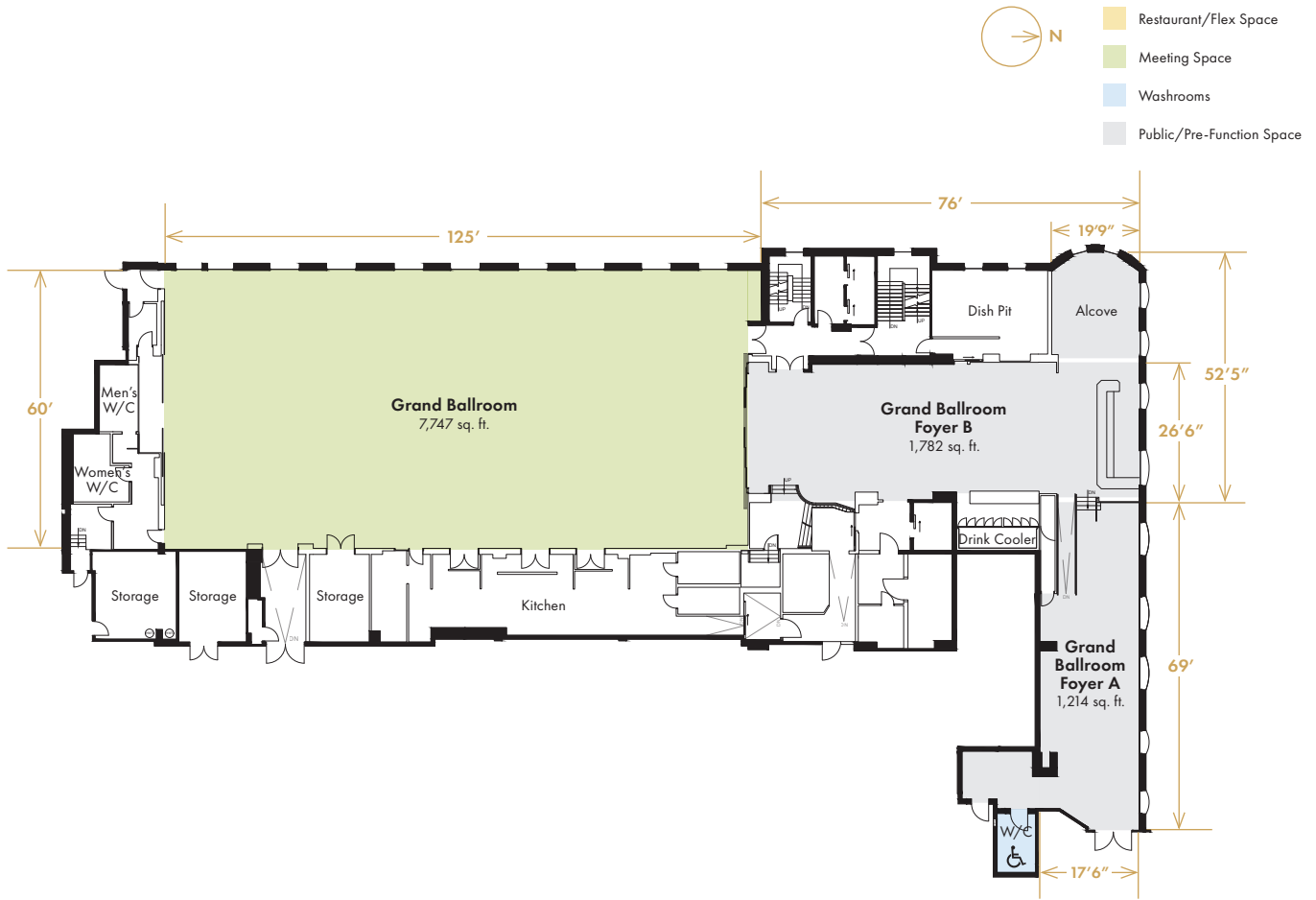
### ELEVATOR INFO

ELEVATOR	DIMENSIONS	HEIGHT	WEIGHT LOAD	LOCATION
Fort Garry Hotel Loading Elevator	5'8" x 5'10" (door 4' wide)	7'9"	3000 lbs./1360 kg	Access of main delivery door off FORT Street



# FORT GARRY PLACE

## FLOOR PLAN



### CAPACITY CHART

ROOM	DIMENSIONS	SQUARE FEET	CEILING HEIGHT	ACCESSIBLE YES OR NO	THEATRE STYLE (WITH HEAD TABLE)	BOARD-ROOM	CLASSROOM (STRAIGHT WITH HEAD TABLE)	U-SHAPE	HOLLOW SQUARE	HALF ROUNDS OF 6 (WITH HEAD TABLE)	ROUNDS (WITH HEAD TABLE / AV / BAR)	COCKTAIL RECEPTION
Grand Ballroom	60' x 125'	7,747	23'	Yes	950	120	380	160	130	360	550	1000
Grand Ballroom Foyer A	69' x 17'6"	1,214	9'6"	Yes	-	-	-	-	-	-	-	75
Grand Ballroom Foyer B	76' x 26'6"	1,782	10'6"	Yes	-	-	-	-	-	-	-	100

### ELEVATOR INFO

ELEVATOR	DIMENSIONS	HEIGHT	WEIGHT LOAD	LOCATION
Fort Garry Place Loading Elevator	4'3" x 5'8" (door 3' wide)	7'9"	4000 lbs./1814 kg	Access off GARRY Street
Loading Ramp (Vehicle Access)	Door 7' Wide	7'		Fort Garry Place - Parking Level P3



# FORT GARRY PLACE (2)

## FLOOR PLAN



### CAPACITY CHART

ROOM	DIMENSIONS	SQUARE FEET	ACCESSIBLE YES OR NO	THEATRE STYLE (WITH HEAD TABLE)	BOARD-ROOM	CLASSROOM (STRAIGHT WITH HEAD TABLE)	U-SHAPE	HALLOW SQUARE	HALF ROUNDS OF 6 (WITH HEAD TABLE)	ROUNDS (WITH HEAD TABLE/AV/BAR)	COCKTAIL RECEPTION
Selkirk Ballroom	69'7" x 28'9"	2,582	Yes	150	54	100	63	66	60	100	150